

[Home](#)

[News](#)

[Our Studios](#)

[Post Production](#)

[Production Services](#)

[Transmissions](#)

[Recent Productions](#)

[Powerhouse Catering](#)

[Tickets for Shows](#)

[Travel Directions](#)


[Contact Us](#)



Email: sales@teddington.tv
Tel. +44 (0)20 8977 3252
Fax. +44 (0)20 8943 4050



 Download this entire web site as a Printable Brochure here !* (60k)

 Download a Risk Assessment for Producers here !* (374k)

 Download Free Studio Plans for Producers here !*

Welcome to Teddington Studios

Teddington Studios is London's premiere digital widescreen television studio complex, located in an attractive riverside setting. An award winning independent production facility, its 'Production Village' concept offers one stop shopping for television production, which includes transmission, and post-production.

Our pricing policy is based upon a modular approach to facilities provision. This offers both flexibility and economy by allowing independent producers to budget for, and access, precisely the package of facilities and services that they require.

Teddington is an environment where all things are possible. The picturesque setting, which overlooks the River Thames, is wholly conducive to minimising problems and maximising creativity.

Teddington Studios excels in both recorded and live Television Production. The Studios are linked by Broadcast lines to BT Tower allowing live television transmission 24 hours per day.

Importantly Teddington Studios is easily and quickly accessible from Central London and has ample parking space for trucks, coaches and cars.

The Studios are also able to provide Post Production for Video and Audio, Library Facilities, Production Office Accommodation, Set and Prop Storage, on site Set Construction and refurbishment, Scenic Artists, and Drapes.

The Studio Site can also be used for location shoots or as a production base for shoots in the local Richmond and Twickenham areas. Production offices from 200 sqft – 20,000 sqft can be hired on short or long term lets.

[: Back to top of page](#)

Home

News

Our Studios

Post Production

Production Services

Transmissions

Recent Productions

Powerhouse Catering

Tickets for Shows

Travel Directions

Contact Us



**TEDDINGTON
STUDIOS**

Email: sales@teddington.tv

Tel. +44 (0)20 8977 3252

Fax. +44 (0)20 8943 4050



Teddington Studios News

NEW RESTAURANT AND CATERING SERVICE

Teddington Studios have decided to take over the management and operation of all the catering facilities at the studio site. After many years of contracting out to catering company Woodhall, it has been decided to introduce a new style of operation directly owned and managed by the studios. A new catering block is being fitted out, with restaurant, bars, and new kitchens. Teddington Studios have appointed a Catering Manager Jemma Morris, two new Chefs and other new staff and the new service will be open within the next two months.

The new operation will be called the **Powerhouse**, named after the building in which it is located, the former 1930's Electrical Powerhouse for the studios.

The Powerhouse will provide good quality food and refreshment throughout the day, and provide service for aftershow parties, hospitality and onsite events. The licensed bars will also be open in the evenings. The new catering service will also operate in the new audience handling area, currently under construction. This new audience handling area will provide more comfortable assembling space for show audiences prior to and after shows and the area will be equipped to provide refreshment and food.

**THE DEATH OF
BRYAN WALL**

It is with great sadness and regret that we have to announce the death of colleague Bryan Wall.

Bryan has worked at the Teddington Studios engineering department for many years. His tireless energy and enthusiasm for any task he undertook endeared him to many people at Teddington, both staff and clients. He will be sorely missed.

**CHINESE CHANNEL
SCHOOLS QUIZ
PROGRAMME**

A series of childrens quiz shows has recently been shot at Teddington Studios for the Chinese Channel. The shows were recorded in Cantonese and over 500 Chinese School children from the UK and Europe took part. The shows are to be shown over the next few months on The Chinese Channel which is transmitted from Teddington Studios.

**FOR MORE
INFORMATION:**

Sales & Client Liason Office.

Email: sales@teddington.tv

Tel: +44 (0)20 8977 3252.

Fax: +44 (0)20 8943 4050

[Home](#)

[News](#)

[Our Studios](#)

[: Studio 1](#)

[: Studio 2](#)

[: Studio 3](#)

[: Studio 4](#)

[Post Production](#)

[Production Services](#)

[Transmissions](#)

[Recent Productions](#)

[Powerhouse Catering](#)

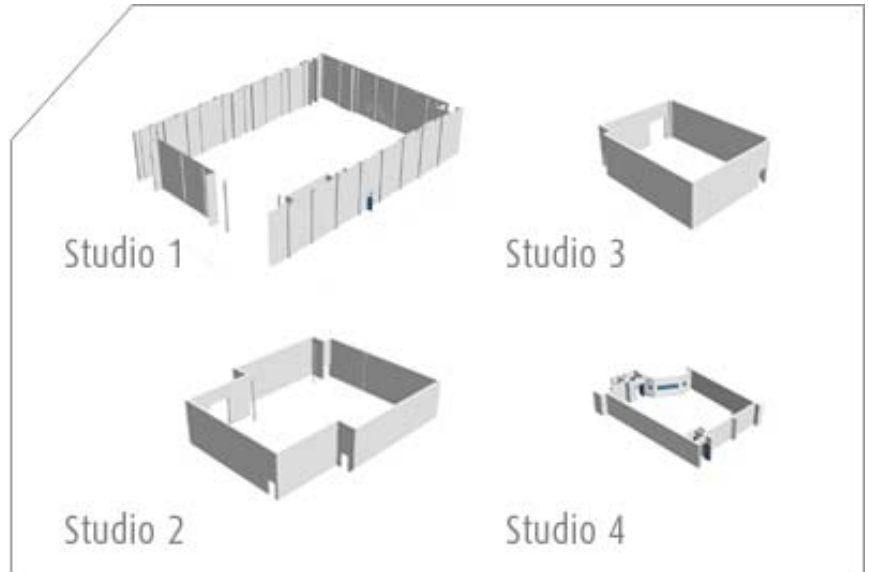
[Tickets for Shows](#)

[Travel Directions](#)

[Contact Us](#)



Email: sales@teddington.tv
Tel. +44 (0)20 8977 3252
Fax. +44 (0)20 8943 4050



Our Studios

Teddington Studios offers a choice of digital widescreen studios all with excellent dimensions, height, access, layout and air-conditioning. All studios are equipped with the monopole lighting system, which provides total lighting flexibility. The cameras are Ikegami 355WCCD widescreen either full size studio or portable are available, all are equipped with Canon lenses and there is a wide choice of cranes and booms.

All the studios are served by a central technical area with digital routing to the videotape areas(VTR) which can accommodate most formats.

Each studio comes complete with producer's rooms, dressing rooms, makeup and wardrobe areas.

The studios have flexible seating systems able to seat large audience numbers. In addition there are hospitality areas, and green rooms for both audience and production. There are two licensed bars, a restaurant and a shop.

At Teddington Studios you can also "go live" and transmit to anywhere in the world directly from the studios plus there is the opportunity to operate interactive television systems.

CAR PARKING

350 Space Multi-Storey car Park
Car, Limousine and Coach Service

[: Back to top of page](#)

SECURE PROP CAGES

14 Lockable Prop Cages (available in a variety of sizes)

[: Back to top of page](#)

AMPLE SCENERY STORAGE

10,000 sqft.

SCRIPT DUPLICATION

3 hour script turnaround service (inc. coloured paper for OB work)
Predrilled Camera Cards service also available

[: Back to top of page](#)

PRIVATE FUNCTION ROOMS

1 (soon to be 2)

SUPERB HOSPITALITY

3 large classic "arc design" intercommunicating line of sight rooms:
Vision, Production and Sound
Comprehensive vision monitor stacks
Extensive talkback system
Producers Rooms
All Overlooking Studio Floor
Large Green Room

[: Back to top of page](#)

VTR

Accommodating any digital format
Digital Routing for future tape formats
Standards Conversion

[: Back to top of page](#)

FOR MORE INFORMATION:

Sales & Client Liason Office.

Email: sales@teddington.tv

Tel: +44 (0)20 8977 3252.

Fax: +44 (0)20 8943 4050

Home

News

Our Studios

: Studio 1

: Studio 2

: Studio 3

: Studio 4

Post Production

Production Services

Transmissions

Recent Productions

Powerhouse Catering

Tickets for Shows

Travel Directions

Contact Us

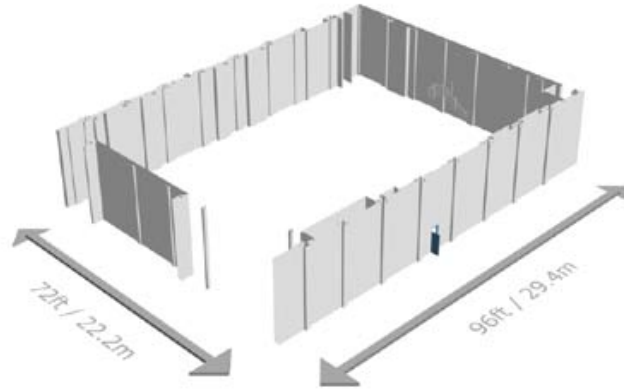


**TEDDINGTON
STUDIOS**

Email: sales@teddington.tv

Tel. +44 (0)20 8977 3252

Fax. +44 (0)20 8943 4050



To Request this studio as a PDF Floor plan click here

Studio 1

Studio One is our largest studio which dominates the whole complex. This fully digital studio is perfect for major productions and boasts a spacious three section control gallery overlooking the studio.

Air conditioned Television Studio with television studio floor. Operational area 7028sqft/653sqmtrs, height to grid 34ft/10.26 mtrs and Audience seating for 500.

The green room is large and equipped with hot beverage facilities, telephones, fax and a Photocopying machine.

OPERATIONAL AREA	7028sqft/653sqmtrs
------------------	--------------------

GROSS AREA	9300sqft/864sqmtrs
------------	--------------------

LIGHTING GRID HEIGHT	34ft/10.26 mtrs
----------------------	-----------------

AUDIENCE SEATING	500
------------------	-----

CAMERAS	Up to 10x HK355W Ikegami Digital Widescreen - combination Studio or Portable. Variety jibs and cranes
---------	---

SOUND MIXER	Gallery mixer 84 stereo channels including 24 float channels (AMS Calrec)
-------------	---

VISION MIXER	Sony Digital DVS8000 with Sony Digital Effects DME5000 up to 2 channels
--------------	---

LIGHTING CONTROL	Strand Galaxy 3 4 x 10Kw circuits 75 + 1 8mobile 5Kw circuits 185 2.5Kw circuits 2 x chaser and flashing circuits. Other mobile, moving or special effects lights as required
------------------	--

CONTROL GALLERY

3 large classic "arc design" intercommunicating line of sight rooms: Vision, Production and Sound
Comprehensive vision monitor stacks
Extensive talkback system
Producers Rooms
All Overlooking Studio Floor
Large Green Room

PRODUCTION SERVICES

Large Make up area and Wardrobe
Luxury dressing rooms
Writers rooms
Day Production offices
Hospitality Areas
Car Parking

FOR MORE INFORMATION:

Sales & Client Liason Office.

Email: sales@teddington.tv

Tel: +44 (0)20 8977 3252.

Fax: +44 (0)20 8943 4050

[Home](#)

[News](#)

[Our Studios](#)

[: Studio 1](#)

[: Studio 2](#)

[: Studio 3](#)

[: Studio 4](#)

[Post Production](#)

[Production Services](#)

[Transmissions](#)

[Recent Productions](#)

[Powerhouse Catering](#)

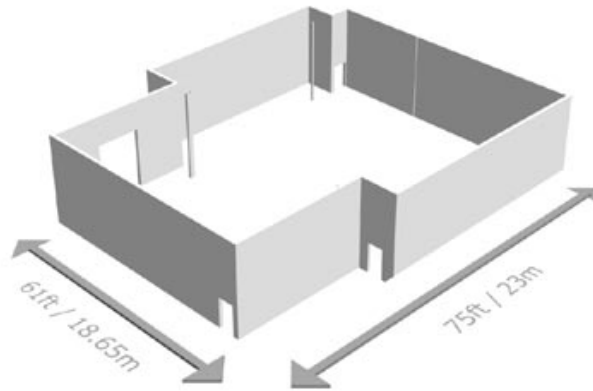
[Tickets for Shows](#)

[Travel Directions](#)

[Contact Us](#)



Email: sales@teddington.tv
Tel. +44 (0)20 8977 3252
Fax. +44 (0)20 8943 4050



To Request this studio as a PDF Floor plan click here

Studio 2

Air conditioned Television Studio with television studio floor. Operational area 4000sqf/372sqmtrs, height to grid 30ft/9 mtrs and Audience seating for 300.

OPERATIONAL AREA	4000sqf/372sqmtrs
GROSS AREA	5400sqft/501.5sqmtrs
LIGHTING GRID HEIGHT	30ft/9mtrs
AUDIENCE SEATING	300
CAMERAS	Up to 8 x HK355W Ikegami Digital Widescreen - combination Studio or Portable. Variety jibs and cranes
SOUND MIXER	Gallery mixer 84 stereo channels including 24 float channels (AMS Calrec)
VISION MIXER	Sony Digital DVS8000 with Sony Digital Effects DME5000 up to 2 channels
LIGHTING CONTROL	Strand Galaxy 3 4 x 10Kwcircuits 40 x 5Kw circuits 90 x 2.5Kw circuits 2 x chaser and flashing circuits. Other mobile, moving or special effects lights as required
CONTROL GALLERY	3 large classic "arc design" intercommunicating line of sight rooms: Vision, Production and Sound Comprehensive vision monitor stacks Extensive talkback system Producers Rooms All Overlooking Studio Floor Producers Rooms Studio Floor linked Green Room

PRODUCTION SERVICES

Large Make up area and Wardrobe
Luxury dressing rooms
Writers rooms
Day Production offices
Hospitality Areas
Car Parking

FOR MORE INFORMATION:

Sales & Client Liason Office.

Email: sales@teddington.tv

Tel: +44 (0)20 8977 3252.

Fax: +44 (0)20 8943 4050

[Home](#)

[News](#)

[Our Studios](#)

[: Studio 1](#)

[: Studio 2](#)

[: Studio 3](#)

[: Studio 4](#)

[Post Production](#)

[Production Services](#)

[Transmissions](#)

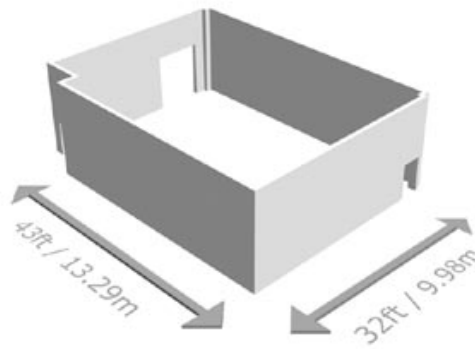
[Recent Productions](#)

[Powerhouse Catering](#)

[Tickets for Shows](#)

[Travel Directions](#)

[Contact Us](#)



To Request this studio as a PDF Floor plan click here

Studio 3

Studio 3 is ideal for productions that do not require an audience. It has the same high quality features of the larger studios with a Producers room which overlooks the studio. Studio 3 also has the added benefit of being virtually self contained in terms of the green room, make-up and dressing rooms.

The excellent control gallery is equipped to serve the studio itself, and act as a major control gallery for large outside programmes with multiple sources. A phone-in monitoring control room lies between the gallery and studio floor.

OPERATIONAL AREA	1292sqf/120sqmtrs
GROSS AREA	2045sqft/190sqmtrs
LIGHTING GRID HEIGHT	34 ft/10mtrs
AUDIENCE SEATING	300
CAMERAS	4 x Ikegami (CCD)
SOUND MIXER	Amek sound desk, 24 channel.
VISION MIXER	Grass Valley GVG 200 (Component)
LIGHTING CONTROL	Strand 520 20 x 5Kw circuits 40 x 2.5Kw circuits
FOR MORE INFORMATION:	Sales & Client Liason Office. Email: sales@teddington.tv Tel: +44 (0)20 8977 3252. Fax: +44 (0)20 8943 4050



Email: sales@teddington.tv
Tel. +44 (0)20 8977 3252
Fax. +44 (0)20 8943 4050



[Home](#)

[News](#)

[Our Studios](#)

[: Studio 1](#)

[: Studio 2](#)

[: Studio 3](#)

[: Studio 4](#)

[Post Production](#)

[Production Services](#)

[Transmissions](#)

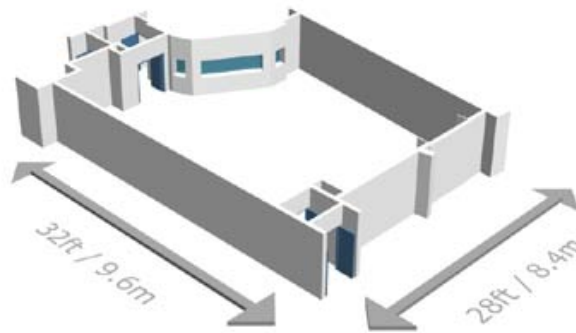
[Recent Productions](#)

[Powerhouse Catering](#)

[Tickets for Shows](#)

[Travel Directions](#)

[Contact Us](#)



To Request this studio as a PDF Floor plan click here

Studio 4

Studio Four is currently being rebuilt.

FOR MORE INFORMATION:

Sales & Client Liason Office.

Email: sales@teddington.tv

Tel: +44 (0)20 8977 3252.

Fax: +44 (0)20 8943 4050



Email: sales@teddington.tv

Tel. +44 (0)20 8977 3252

Fax. +44 (0)20 8943 4050



Home

News

Our Studios

Post Production

: Video Edit Suites

: Audio Dubbing

Production Services

Transmissions

Recent Productions

Powerhouse Catering

Tickets for Shows

Travel Directions

Contact Us



**TEDDINGTON
STUDIOS**

Email: sales@teddington.tv

Tel. +44 (0)20 8977 3252

Fax. +44 (0)20 8943 4050



Post Production

The post production facility at Teddington Studios is linked to the central CAR so that each edit suite can be fed with sources other than from their integral Digital VTRs. The other sources can be from the onsite studios or from external feeds via the extensive broadcast line network connecting Teddington to BT Tower and CAST.

The suites are well appointed with client areas, runner service and all the other facilities that you would expect in a London Post Production House. Teddington has a team of highly experienced broadcast editors who have worked on many award winning programmes or alternatively freelance editors can be used.

The types of programmes edited at Teddington Studios include: Kilroy, The Vault, Des and Mel, The Professionals, Cavegirl, Last of the Summer Wine, This is Your Life, Des O'Connor Tonight, plus many other documentaries, films and corporate programmes.

VIDEO EDIT SUITES

Linear digital edit suites equipped with either, Sony, Abekas or Grass Valley Vision mixers and effects.

Avid non linear suites with latest version software, online and offline, compressed and uncompressed.

AUDIO DUBBING

2 well equipped sound suites with Logic desks and AMS Audiofile systems.

Voice over booths, ADR and Foley facilities.

Extensive sound effects and music library.

The audio post team are all highly experienced broadcast sound mixers having worked on light entertainment, documentaries, sitcoms, dramas and feature films.

Tape library for client programme storage and raw stock can be provided at highly competitive rates.

: [Back to top of page](#)

FOR MORE INFORMATION:

Sales & Client Liason Office.

Email: sales@teddington.tv

Tel: +44 (0)20 8977 3252.

Fax: +44 (0)20 8943 4050

[Home](#)

[News](#)

[Our Studios](#)

[Post Production](#)

[Production Services](#)

[: Day Production Offices](#)

[: Make-Up](#)

[: Wardrobe](#)

[: Dressing Rooms](#)

[: Catering](#)

[: Audience Handling](#)

[: Car Parking](#)

[: Other Services](#)

[: Office](#)

[Transmissions](#)

[Recent Productions](#)

[Powerhouse Catering](#)

[Tickets for Shows](#)

[Travel Directions](#)

[Contact Us](#)



Email: sales@teddington.tv
Tel. +44 (0)20 8977 3252
Fax. +44 (0)20 8943 4050



Production Services

DAY PRODUCTION OFFICES

Your studio comes with a suite of fully furnished day production offices with television and PC. Tea, coffee, fresh fruit and sweets are also provided.

[: Back to top of page](#)

MAKE-UP

Make-up facilities can be both a bone of contention for performers and a bottleneck for production staff. Not so at Teddington. We have three very large and impressive make-up rooms. The make-up rooms servicing studios 1 and 2 are air-conditioned and have eight make-up places each with quality chairs and Headrests. Make-up room 1 has a waiting room with refreshment facilities and both have everything you would expect from colour corrected lighting to back wash facilities.

Room 3 which services our smaller studio has air-conditioning, two make-up places, one back wash basin and colour corrected lighting.

There is also a wealth of rollers, benders, clippers, wigs, facial hair, wig stands and chin blocks for hire as well as all the usual OB equipment and accessories

[: Back to top of page](#)

WARDROBE

Our wardrobe area and facilities are designed to cope with any eventuality.

We have all the necessary in-house resources to ensure that even the largest costume productions will not turn into a drama.

Our unusually large studio servicing room is extremely well equipped with plenty of work space, storage room and overhead power, we have a spacious sewing area with an over-locking machine, and our laundry facilities include industrial washing machines, dryers and sinks for washing or dyeing.

Monitors link the whole area to the studios for complete continuity.

[: Back to top of page](#)

DRESSING ROOMS

Dressing rooms and production services are an important part of any professional studio complex. Teddington Studios offers a range of star dressing rooms to suite all requirements. There's also extensive makeup and wardrobe facilities plus a laundry and storage area.

Production offices and writers rooms are also available and all these facilities are supervised and supported by the Teddington Studios Production Services team.

[: Back to top of page](#)

CATERING

Teddington Studios provides first class catering facilities on site with a dining area and café, with refreshments, coffee, tea, sandwiches, breakfast, lunch and crew supper. Food and drinks can also be provided in the dressing rooms, production offices and green rooms. After show parties can be held at the Studios or a riverboat can be provided for a party and cruise down the Thames.

Next door to the studios are two excellent "pubs" both of which also provide good food and refreshment. There is also a yacht club next door which welcomes visitors and clients from Teddington Studios and can provide food and refreshment. If gourmet meals are required a few minutes walk from the studios are two excellent restaurants, the Wharf or the Auberge.

Nearby shops include Marks and Spencer, Tescos and others in Teddington High Street.

[: Back to top of page](#)

**AUDIENCE
HANDLING**

A large area is provided at Teddington Studios for the holding and servicing of audiences for the shows. One recent production at Teddington Studios had an audience of 24,000 people over its 30 week run. Access by coach and coach parking is easy at Teddington Studios.

There is also on site security and first aid facilities and trained personnel.

Teddington Studios operates a considerate Health and Safety policy.

: [Back to top of page](#)

CAR PARKING

Unlike many television studios, Teddington Studios has extensive car parking facilities and easy access for scenery trucks, coaches and goods transport.

In addition parking spaces can be allocated by name to clients if required.

184 Space Multi-Storey Car Park

124 Space Car Park (at rear of Studios)

12 VIP Spaces (in front of Studios)

: [Back to top of page](#)

OTHER SERVICES

Set Storage

Prop Storage

Unit Vehicle Parking (subject to availability)

Shuttle Bus (to and from Teddington Train Station)

: [Back to top of page](#)

OFFICE RENTAL

As well as providing production offices, Teddington also boasts a range of offices to let for short or long terms, from small single offices to an executive suite overlooking the river.

These can be rented furnished or unfurnished, and the rental costs include parking and 24-hour security as well as heating, lighting, cleaning and business rates.

Other services on site include reception, post room, catering and hospitality, and small or large meeting rooms which can be hired by the hour or by the day

[: Back to top of page](#)

FOR MORE INFORMATION:

Sales & Client Liason Office.

Email: sales@teddington.tv

Tel: +44 (0)20 8977 3252.

Fax: +44 (0)20 8943 4050

Home

News

Our Studios

Post Production

Production Services

- : Facility Lines
- : Satellite Downlink
- : Recording and Playback

: CAST Web site
(Cable and Satellite
Transmission Ltd)

Recent Productions

Powerhouse Catering

Tickets for Shows

Travel Directions

Contact Us



**TEDDINGTON
STUDIOS**

Email: sales@teddington.tv
Tel. +44 (0)20 8977 3252
Fax. +44 (0)20 8943 4050

AUCTION TV
WORLD



THE CHINESE CHANNEL

Transmissions

Teddington Studios Transmission Department is linked directly to BT Telecom Tower so as to facilitate the live broadcast of programs from our studios.

FACILITY LINES	4 x 270 Mbit In/Out Serial Digital Component Circuits
----------------	---

SATELLITE DOWNLINK	Ideal for receiving Sport and News feeds.
--------------------	---

RECORDING AND PLAYBACK	Independent Recording and Playback Facilities (available on request).
------------------------	---

4 Wire and ISDN Circuits Available

FOR MORE INFORMATION:	Sales & Client Liason Office.
-----------------------	-------------------------------

Email: sales@teddington.tv

Tel: +44 (0)20 8977 3252.

Fax: +44 (0)20 8943 4050

Home

News

Our Studios

Post Production

Production Services

Transmissions

Recent Productions

- : 19 and Thames
- : Alomo Productions
- : Avalon
- : Assembly Films
- : BBC
- : Big Bear
- : BSKyB
- : Carlton
- : GMTV / Disney
- : Hartswood Films
- : Highstakes
- : Kilroy Television
- : Lucky Dog Productions
- : Pearson Television
- : Thames Television
- : Vera
- : Witzend Productions

- : History of the Studios

Powerhouse Catering

Tickets for Shows

Travel Directions

Contact Us



Alistair McGowan



Today with Des&Mel



Kilroy



Pop Idol



My Hero



The Office

Recent Productions

Studio 1 at Teddington is perfect for sitcoms and entertainment shows with audiences. Our own seating rostra will seat up to 462. Our monopole system provides for fast lighting rigs, and the high cyc line allows for tall sets. Black and white cycs, chromakey, backcloths and gauzes are all available.

19 and Thames

Pop Idol

: [Back to top of page](#)

Alomo Productions

Believe Nothing
House that Jack Built
Beastly Behaviour
Goodnight Sweetheart
Birds of a Feather
Starting Out
Cry Wolf

: [Back to top of page](#)

Avalon

The Sketch Show
Harry Hill

: [Back to top of page](#)

Assembly Films

Black Books
In Exile

: [Back to top of page](#)



Email: sales@teddington.tv
Tel. +44 (0)20 8977 3252
Fax. +44 (0)20 8943 4050

BBC
The Office
Tomorrow's World
Lesley Garrett Tonight

BBC Bristol
Animal Magic - Series I, II & II

BBC Scotland
Heartburn Hotel

BBC Music Entertainment
Chris Moyles Show
Phone Zone

[: Back to top of page](#)

Big Bear
My Hero

[: Back to top of page](#)

BSkyB
Barry Norman Movie Preview

[: Back to top of page](#)

Carlton
Today with Des and Mel
The Vault
Late Night with Jerry Springer

[: Back to top of page](#)

GMTV/Disney
Diggitt

[: Back to top of page](#)

Hartwood Films
Coupling
Men Behaving Badly
Is It Legal?

[: Back to top of page](#)

Highstakes
Highstakes

[: Back to top of page](#)

Kilroy Television
Kilroy

[: Back to top of page](#)

Lucky Dog Productions
Babes in the Wood - Series I & II

[: Back to top of page](#)

Pearson Television

The Brian Conley Show
Night Fever
Unfinished Business

[: Back to top of page](#)

Thames Television

This Is Your Life
Des O'Connor Tonight
Unfinished Business

[: Back to top of page](#)

Vera

Alistair McGowan's Big Impression
Rory Bremner
Unfinished Business

[: Back to top of page](#)

Witzend Productions

Dr Willoughby

[: Back to top of page](#)

FOR MORE INFORMATION:

Sales & Client Liason Office.

Email: sales@teddington.tv

Tel: +44 (0)20 8977 3252.

Fax: +44 (0)20 8943 4050

Home

News

Our Studios

Post Production

Production Services

Transmissions

Recent Productions

Powerhouse Catering

Tickets for Shows

Travel Directions

Contact Us



**TEDDINGTON
STUDIOS**

Email: sales@teddington.tv

Tel. +44 (0)20 8977 3252

Fax. +44 (0)20 8943 4050



Powerhouse Catering

A new catering and restaurant service at Teddington Studios:

THE POWERHOUSE

Catering for all your eating and refreshment needs at Teddington Studios.

- Crew meals
- Dressing Room Service
- After show parties
- Green Room Hospitality
- Private Parties
- Audience Hospitality

Good food, Good wines,
tailored to your requirements.

FOR A MENU AND
FURTHER INFORMATION
CONTACT:

Jemma Morris, Catering Manager

Email: jmorris@teddington.tv

Tel: +44 (0)20 8977 3252

Home

News

Our Studios

Post Production

Production Services

Transmissions

Recent Productions

Powerhouse Catering

Tickets for Shows

Travel Directions

Contact Us



Email: sales@teddington.tv
Tel. +44 (0)20 8977 3252
Fax. +44 (0)20 8943 4050



Tickets For Shows

Teddington Studios are not responsible for issuing tickets for the shows that are made here. Listed below at the names and telephone numbers of several Audience Handling Companies that will be able to help you.

Clappers Telephone: 020 8532 2770
Web site: www.clappers-tickets.co.uk

Standing Room Only Telephone: 020 8870 0111
Web site: www.standroom.com

BBC Ticket Unit (TV & Radio) Telephone: 020 8576 1227
Web site: www.bbc.co.uk/whatson/tickets

Applause Store Telephone: 020 8324 2700
Web site: www.applausestore.com

Kilroy Telephone: 020 7893 7866

Avalon Ticket Unit Internet booking only.
Web site: www.tvrecordings.com

LWT Internet booking only.
Web site: www.tickets.granadamedia.com

Channel 4

Internet booking only.

Web site: www.channel4.com/tickets.html

FOR MORE
INFORMATION:

Sales & Client Liason Office.

Email: sales@teddington.tv

Tel: +44 (0)20 8977 3252.

Fax: +44 (0)20 8943 4050

[Home](#)

[News](#)

[Our Studios](#)

[Post Production](#)

[Production Services](#)

[Transmissions](#)

[Recent Productions](#)

[Powerhouse Catering](#)

[Tickets for Shows](#)

[Travel Directions](#)

[: By Road](#)

[: By Rail](#)

[: By Bus](#)

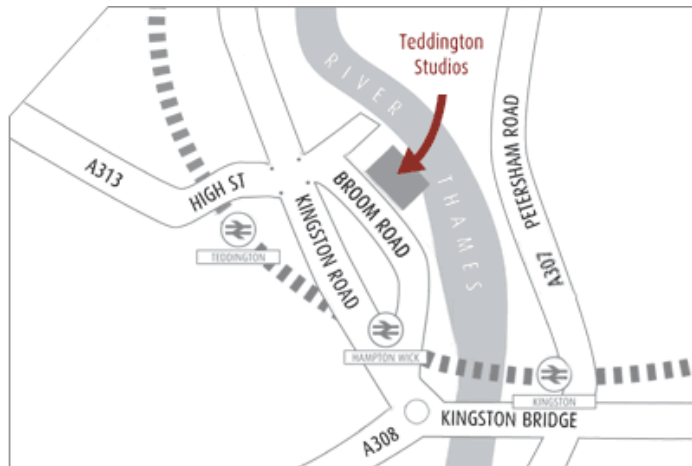
[: By Air](#)

[: Parking](#)

[Contact Us](#)



Email: sales@teddington.tv
Tel. +44 (0)20 8977 3252
Fax. +44 (0)20 8943 4050



Download this map as a PDF (26k)

Travel Directions

Teddington Studios are situated in Broom Road, which is just off Ferry Road, Teddington Lock, Teddington, Middlesex. Enter Ferry Road at the junction of Twickenham Road, Kingston Road and Teddington High Street and bear right. Teddington Studios are situated on the left hand side just past the Anglers Pub.

Download Travel Directions from the Links below in Adobe Acrobat Format:
: Don't have Adobe Acrobat? Download the *FREE* Adobe Acrobat Installer here

BY ROAD

- [: Download Directions From the M25](#)
- [: Download Directions From Hammersmith](#)
- [: Download Directions From Hampton Court](#)
- [: Download Directions From Kingston Bridge](#)

BY RAIL

If travelling by train the easiest stations to arrive at are Teddington or Hampton Wick.

At Hampton Wick simply leave the station by the main exit and cross over the road to the bus stop and catch either the bus 281 or the 285. Ask for the St Alban's Church, alight there, cross over the road and turn into Ferry Road and bear right into Broom Road.

If travelling to Teddington station, a mini bus service is available for crew, staff and tenants at Teddington Studios. This is run between the hours of 08.30 - 09.30 and 17.30 - 18.30. For this service please wait in Adelaide Road, which is the main entrance to the station.

[: Back to top of page](#)

BY BUS

No.s 281 and 285

Both can be caught from Hampton Wick Station, Teddington High Street or from Kingston (opposite Bentalls). Ask for St. Alban's Church, alight there, cross the road, turn into Ferry Road and bear right into Broom Road.

[: Back to top of page](#)

BY AIR

**: [Download Directions From Gatwick](#)
: [Download Directions From Heathrow](#)
: [Download Directions From Stanstead](#)
: [Download Directions From City of London](#)**

: [Back to top of page](#)

PARKING

**Parking on site for cars and coaches is strictly by prior arrangement. Please phone the switchboard for further details.
020 8977 3252.**

: [Back to top of page](#)

MORE INFORMATION:

Sales & Client Liason Office.

**Email: sales@teddington.tv
Tel: +44 (0)20 8977 3252.
Fax: +44 (0)20 8943 4050**

Home

News

Our Studios

Post Production

Production Services

Transmissions

Recent Productions

Powerhouse Catering

Tickets for Shows

Travel Directions

Contact Us



Email: sales@teddington.tv
Tel. +44 (0)20 8977 3252
Fax. +44 (0)20 8943 4050



Contact Us

Please fill out the form if you would like one of our Client Liason Team to contact you. Alternatively you can contact us on Tel: +44 (0)20 8977 3252. Fax: +44 (0)20 8943 4050.

*Required fields

* Re. Studio...

* Action Required

*First Name

*Last Name

*Company

*E-mail address

Daytime phone

Please also read our [Our Online Privacy Policy](#)

FOR MORE INFORMATION:

Sales & Client Liason Office.

Email: sales@teddington.tv

Tel: +44 (0)20 8977 3252.

Fax: +44 (0)20 8943 4050